



Investment Opportunities

April 2013

Update on investments



Budapest, Hungary



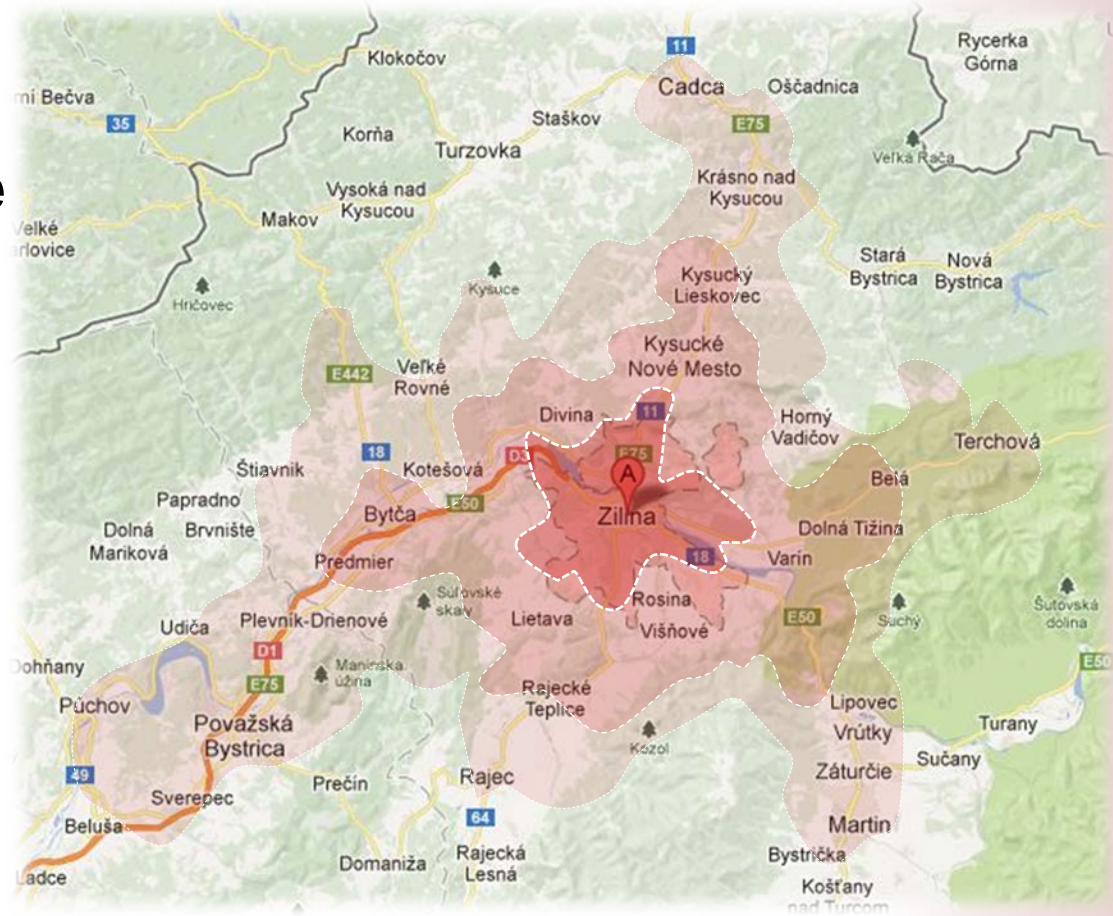
Aupark Shopping Center - Zilina, Slovakia



Aupark Shopping Center - location

- Zilina, Slovakia – economic outlook
- 85 000 residents; seat of a region of 700,000 residents
- Catchment
 - 380,000
 - 30 minutes' drive

Catchment	Population
10 minutes	90 000
20 minutes	180 000
30 minutes	380 000



Aupark Shopping Center



Aupark Shopping Center - Tenants & layouts

Major Tenants

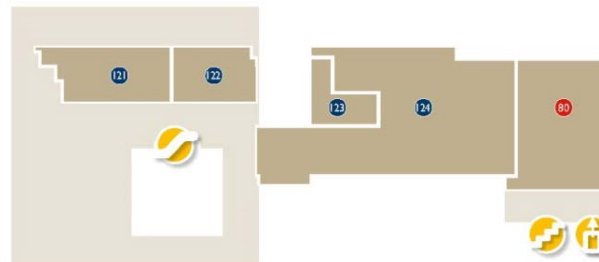
- Billa
- H&M
- New Yorker
- C&A
- Deichmann



1st floor (Ground floor)



2nd floor



3rd floor

Retail space

21,000m²

99% let

Office space

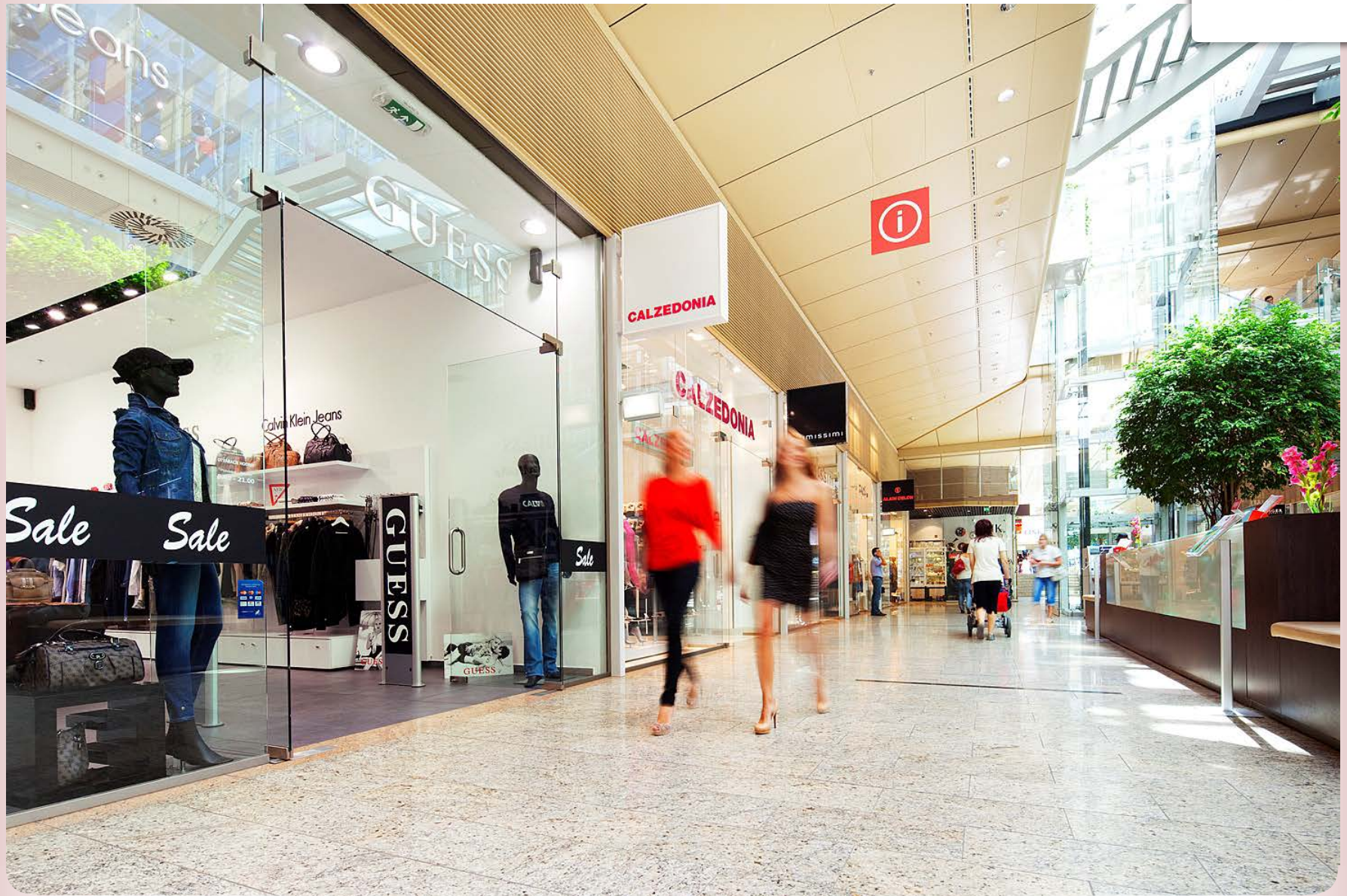
1,700m²

In process

Aupark Shopping Center - Zilina, Slovakia



Aupark Shopping Center - Zilina, Slovakia



Aupark Shopping Center - Zilina, Slovakia



Aupark Shopping Center

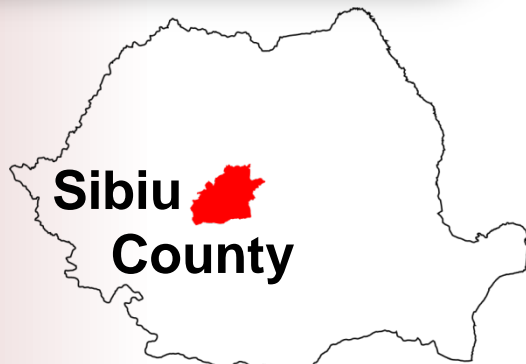
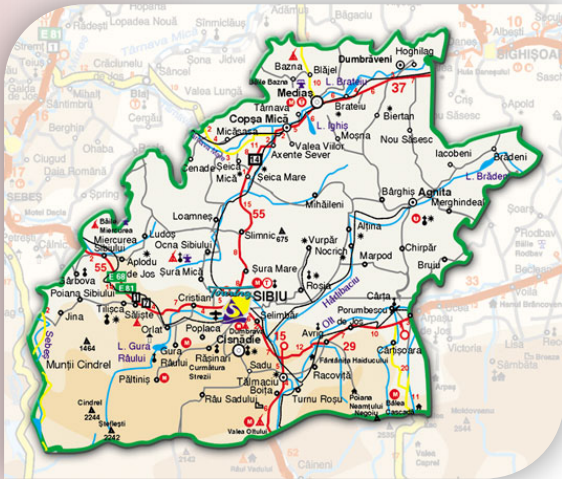


Sibiu Shopping City (Acquisition of distressed debt)

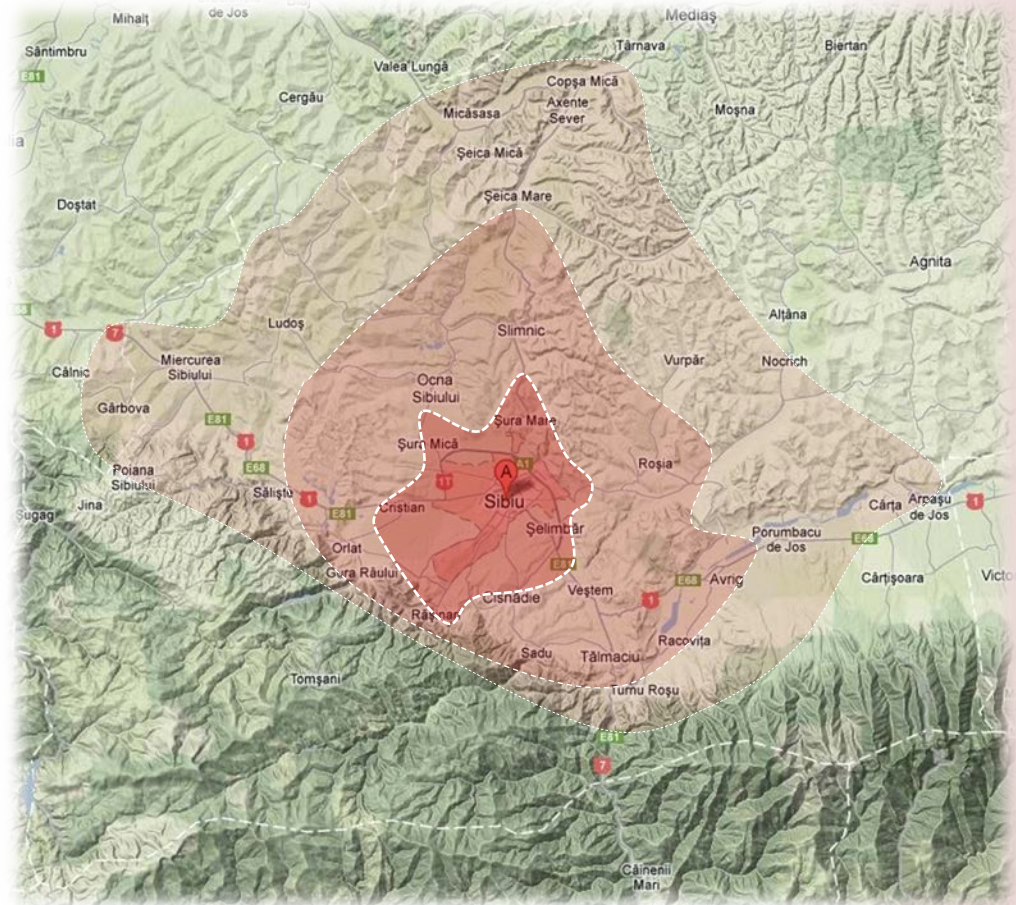


Sibiu Shopping City – location

- Sibiu, Romania – economic outlook
- 137,000 residents, county capital
- Catchment of 260,000 – 45 minutes' drive



376,000 inhabitants



Sibiu Shopping City – tenants



Major Tenants

- Carrefour
- Real
- H&M
- New Yorker
- C&A
- Takko
- Deichmann

Retail space

77,000 m²



Sibiu Shopping City



Sibiu Shopping City



Acquisition & extension in Severin, Romania

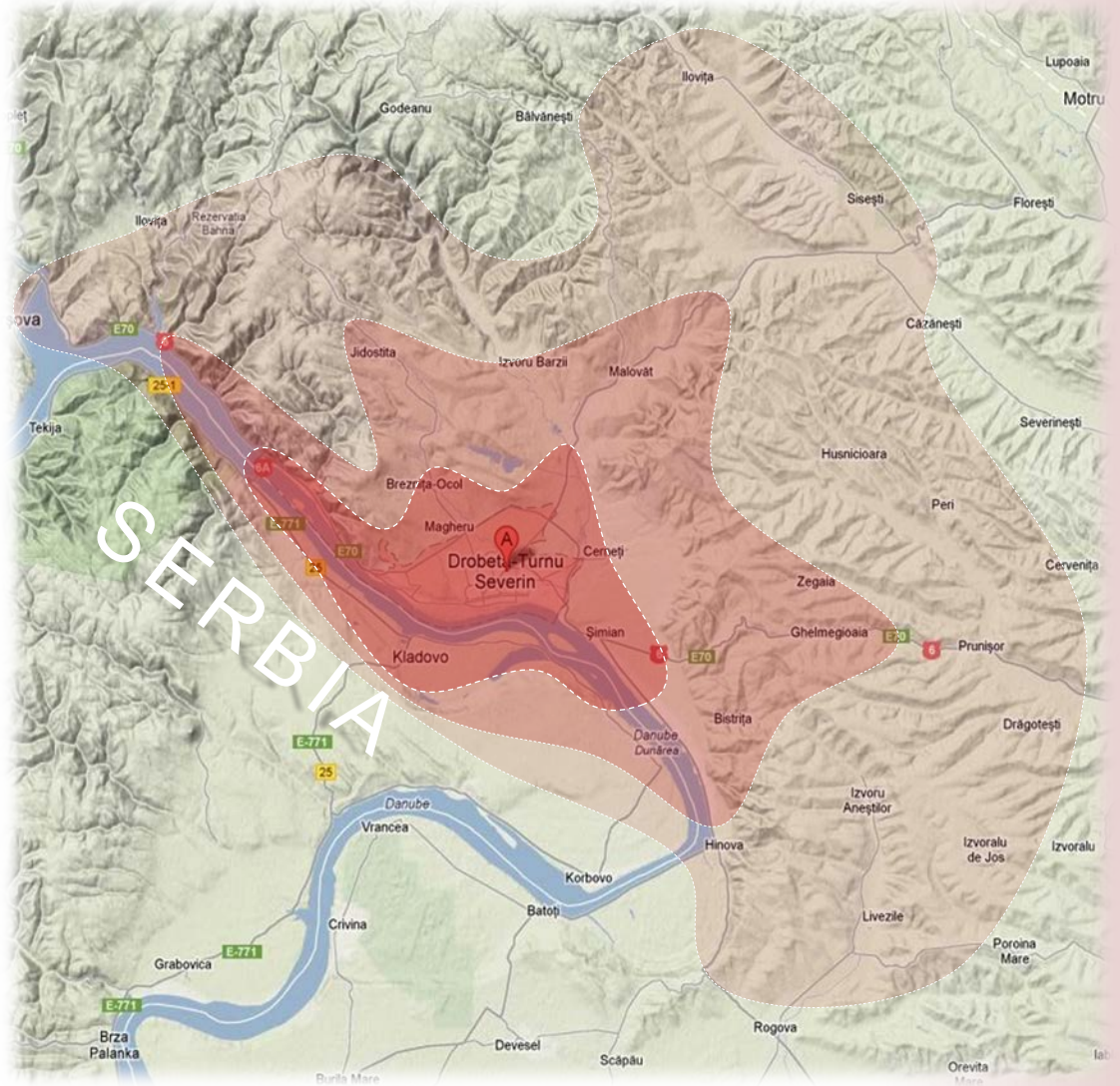


Severin Shopping Centre - location

- Catchment of 175,500 – 45 minutes' drive

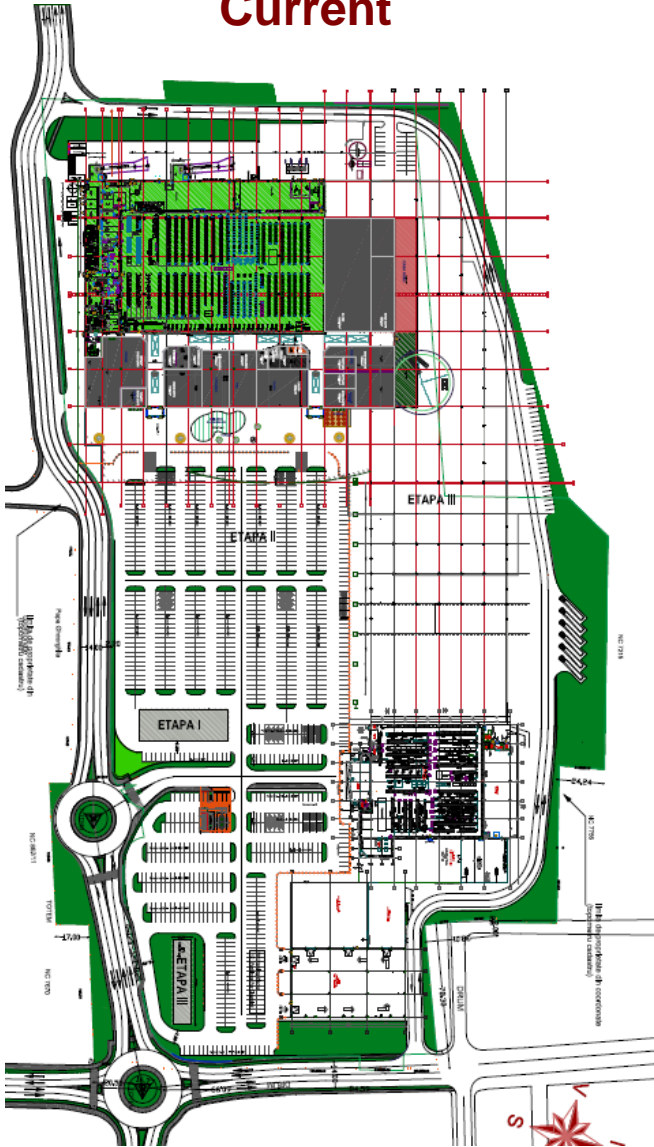


255,000 inhabitants

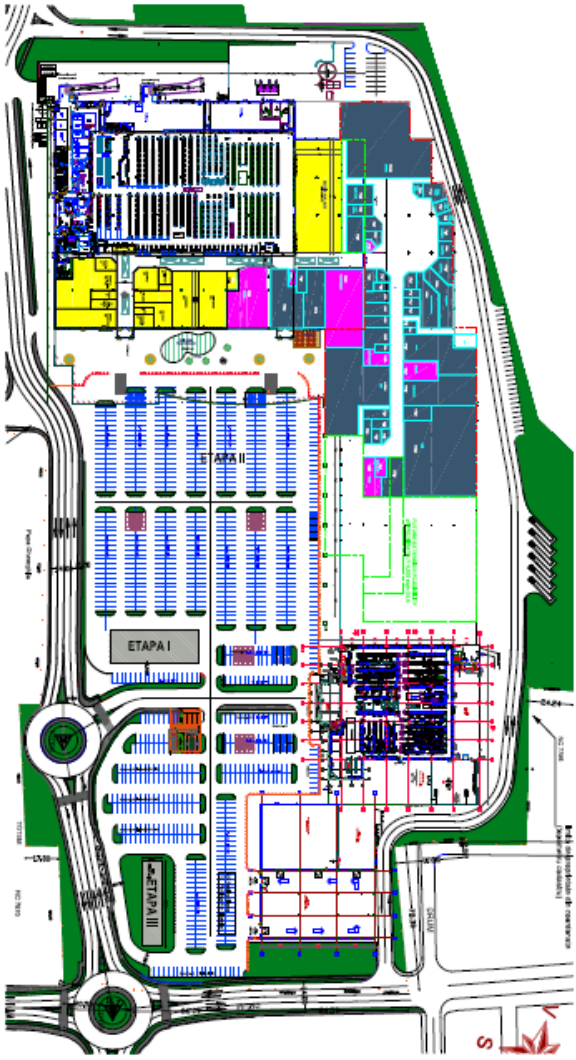


Severin Shopping Centre - layout

Current



Future



Severin Shopping Centre



Severin Shopping Centre



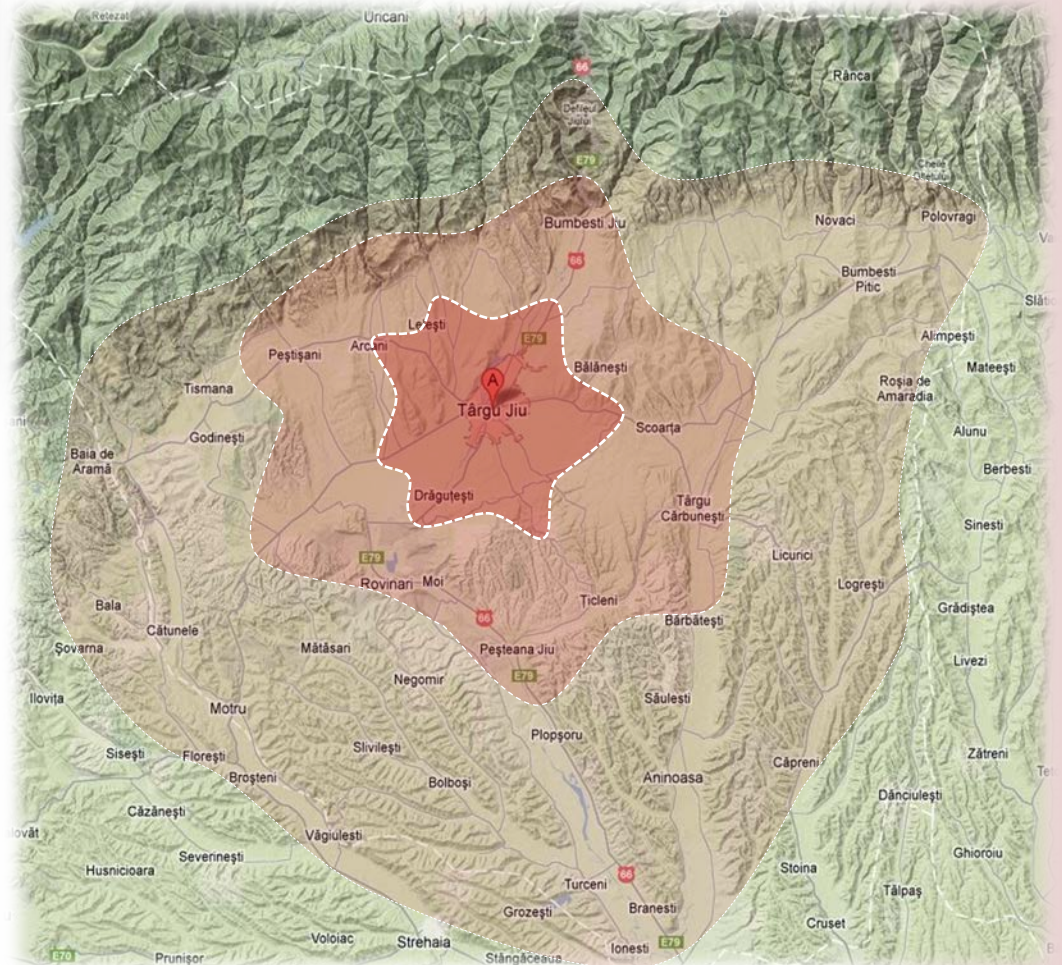
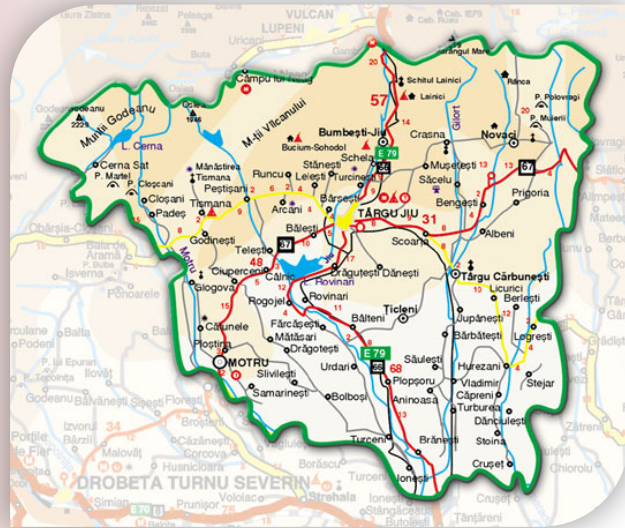
Severin Shopping Centre



Development in Targu Jiu, Romania

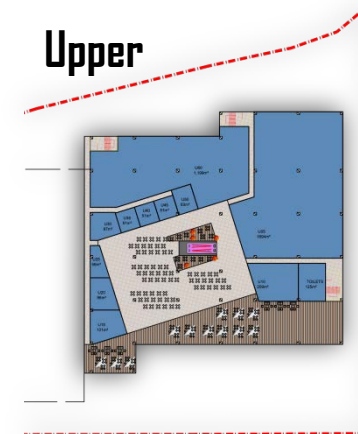
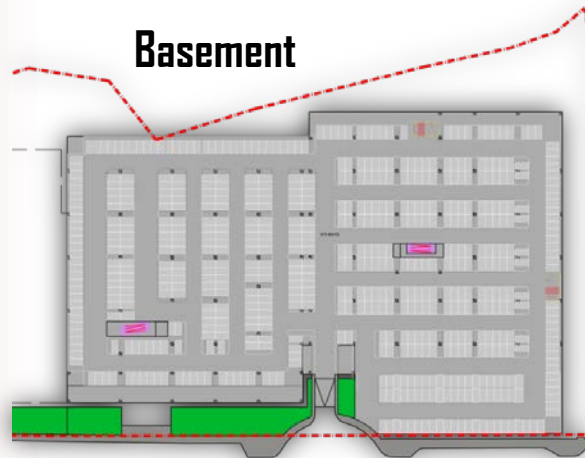


Development in Targu Jiu – location



335,000 inhabitants

Development in Targu Jiu – initial layout





Questions & Answers